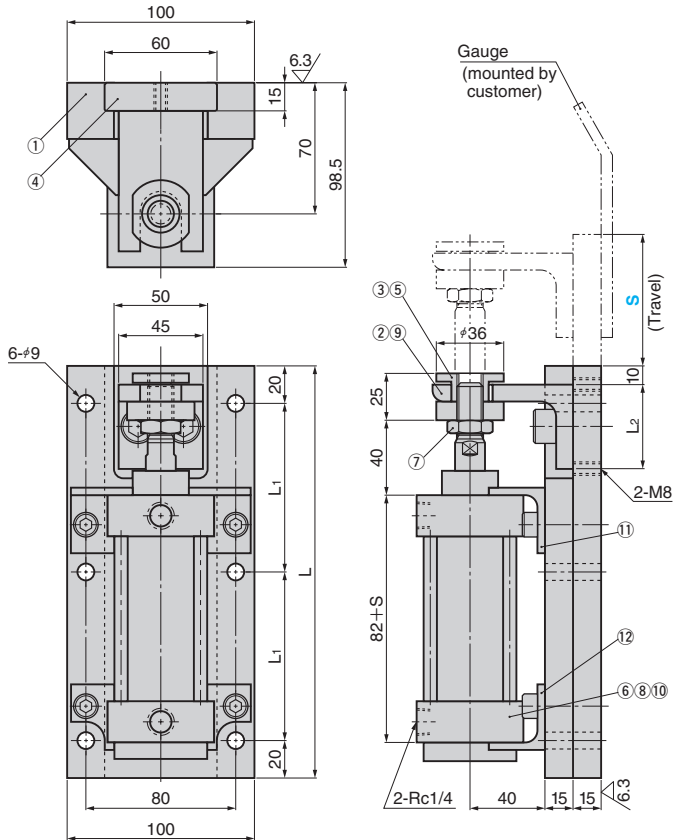


DA Gauge

DISAPPEARING GAUGE

CAD
FILE

DAB



L	L1	L2	Weight(kg)	Catalog No.	S
220	90	25	11.2	DAB	50
270	115	45	13.5		100
320	140	95	16.0		150
370	165	145	18.7		200



Order

Catalog No.

DAB

S

100



S = 200 is made to order.

For Operation

- Use DA gauge "DAB" as the panel locator for a draw die.
- This is without Base Plate, Lubrication Required.
- The bolt holes of the sliding plate (④) are threaded so that the gauge may be mounted from the gauge side. (Dimension L₂)

Table of Components

No.	Description	Qty	Material and Remark	No.	Description	Qty	Material and Remark
①	Cover Plate	1	FC250	⑦	Hexagon Nut	1	For M14
②	Arm	1	SS400	⑧	Hexagon Socket Head Bolt	4	SCM435 M8×20
③	Cylinder Head Block	1	SS400	⑨	Hexagon Socket Head Bolt	2	SCM435 M12×20
④	Slide Plate	1	S45C	⑩	Spring Washer	4	For M8
⑤	Split Pin	1	SWRM10 #3×45	⑪	Angle	1	SS400
⑥	Air Cylinder	1	XDC4LA-40 by Taiyo	⑫	Angle	1	SS400