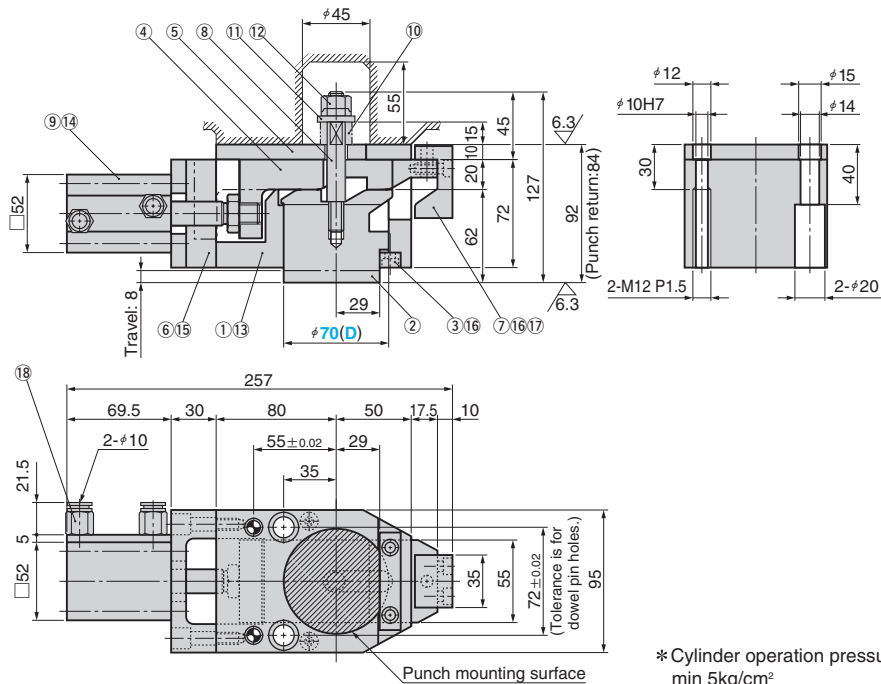
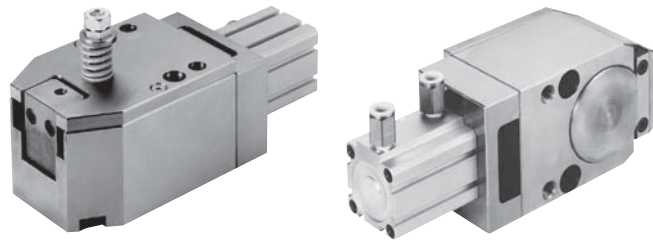


Removable Punch Retainer Unit

PNEUMATIC

CAD
FILE

SHPUG 70



* Cylinder operation pressure
min 5kg/cm²

Table of Components

No.	Description	Qty	Material and Remark	No.	Description	Qty	Material and Remark
①	Slide Casing	1	S45C HRC25~28	⑩	Spring	1	SWOSC-V TR21-30
②	Float Pin	1	S45C	⑪	Washer	1	SS400
③	Key	1	SK3 HRC40~45	⑫	Hard Lock Nut	1	S45C M10
④	Slide Plate	1	S45C HRC55~60	⑬	Cross-recessed Head Countersunk Head Screw	2	SCM435 M5×16
⑤	Backing Plate	1	S45C HRC25~28	⑭	Hexagon Socket Head Bolt	4	SCM435 M5×75
⑥	Block	1	SS400	⑮	Hexagon Socket Head Bolt	2	SCM435 M8×30
⑦	Positive Return	1	S45C HRC55~60	⑯	Hexagon Socket Techno-Bolt	4	SCM435 M6×15
⑧	Stud Bolt	1	SS400	⑰	Dowel Pin with Female Thread	1	φ8×18
⑨	Air Cylinder	1	SSD-L-40-30-N By CKD	⑱	Male Connector	2	GWS10-6 By CKD

⑩ Spring		⑨ Cylinder	Weight	Catalog No.	(D)
Initial Load N	Final Load N	Travel	kg		
96	206	30	12	SHPUG	70



Order

Catalog No. (D)
SHPUG 70



Option

Option Code	Specification
LHC	The accompanying pipe joint is changed to L type (elbow).

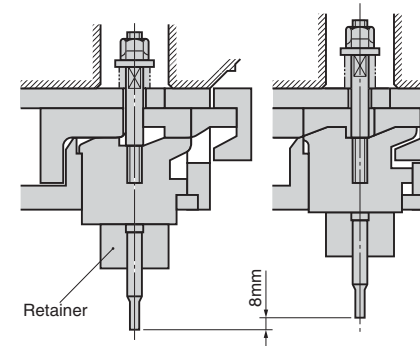


Order

SHPUG70-LHC



Example



⚠ The limit number for joint operation is 4 units. If you want to use the unit in joint operation, please contact our sales representative.

* The air ports can be easily changed by rotating the cylinder mounting position (4 directions).

* Performance specifications
 • Unit capacity40.8kN
 • Tooling weight ...5kg

Removable Punch Retainer Unit

PNEUMATIC

CAD
FILE

SHPUG 90

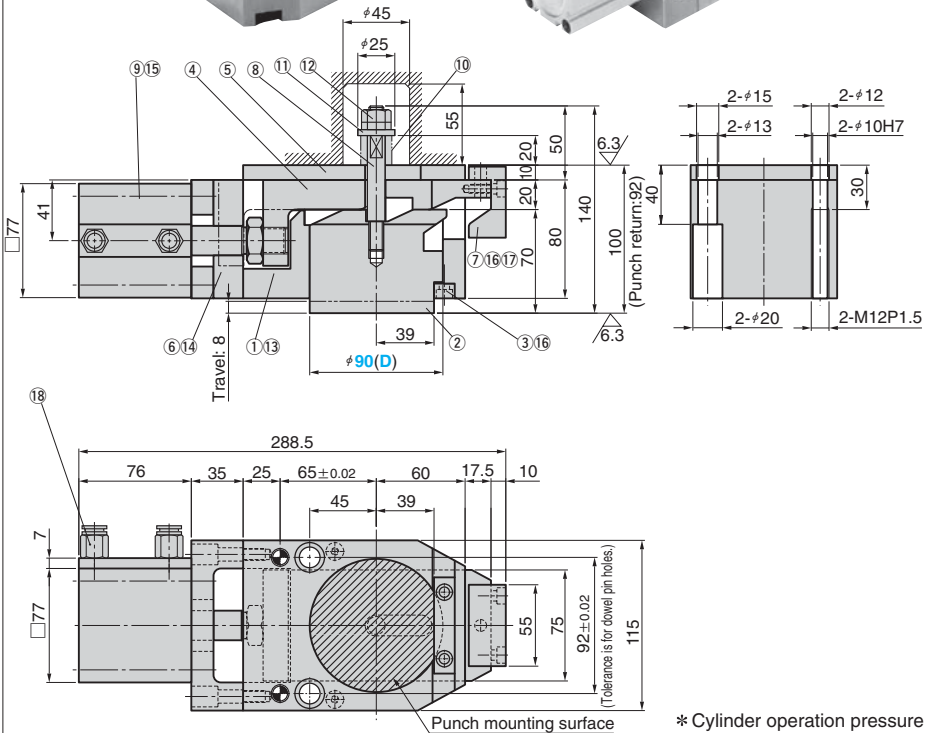
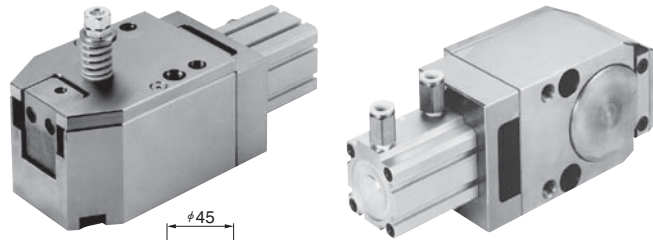


Table of Components

No.	Description	Qty	Material and Remark	No.	Description	Qty	Material and Remark
①	Slide Casing	1	S45C HRC25 to 28	⑩	Spring	1	SWOSC-V TR21-40
②	Float Pin	1	S45C	⑪	Washer	1	SS400
③	Key	1	SK3 HRC40 to 45	⑫	Hard Lock Nut	1	S45C for M10
④	Slide Plate	1	S45C HRC55 to 60	⑬	Cross-recessed Head Countersunk Head Screw	2	SCM435 M5×16
⑤	Backing Plate	1	S45C HRC25 to 28	⑭	Hexagon Socket Head Bolt	4	SCM435 M8×30
⑥	Block	1	SS400	⑮	Hexagon Socket Head Bolt	4	SCM435 M8×80
⑦	Positive Return	1	S45C HRC55 to 60	⑯	Hexagon Socket Techno-Bolt	4	SCM435 M6×16
⑧	Stud Bolt	1	SS400	⑰	Dowel Pin with Female Thread	1	φ8×18
⑨	Air Cylinder	1	SSD-L-63-30-N By CKD	⑱	Male Connector	2	GWS10-8 By CKD

⑩ Spring		⑨ Cylinder	Weight	Catalog No.	(D)
Initial Load N	Final Load N	Travel	kg		
124	206	30	18	SHPUG	90



Order

Catalog No. (D)
SHPUG 90



Option

Option Code	Specification
LHC	The accompanying pipe joint is changed to L type (elbow).

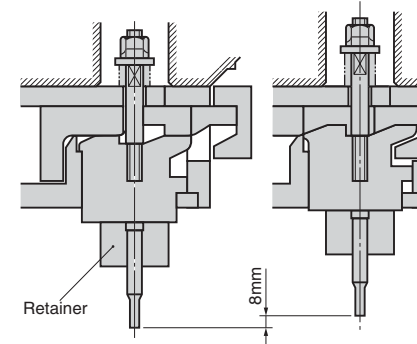


Order

SHPUG90-LHC



Example



⚠ The limit number for joint operation is 4 units. If you want to use the unit in joint operation, please contact our sales representative.

* The air ports can be easily changed by rotating the cylinder mounting position (4 directions).

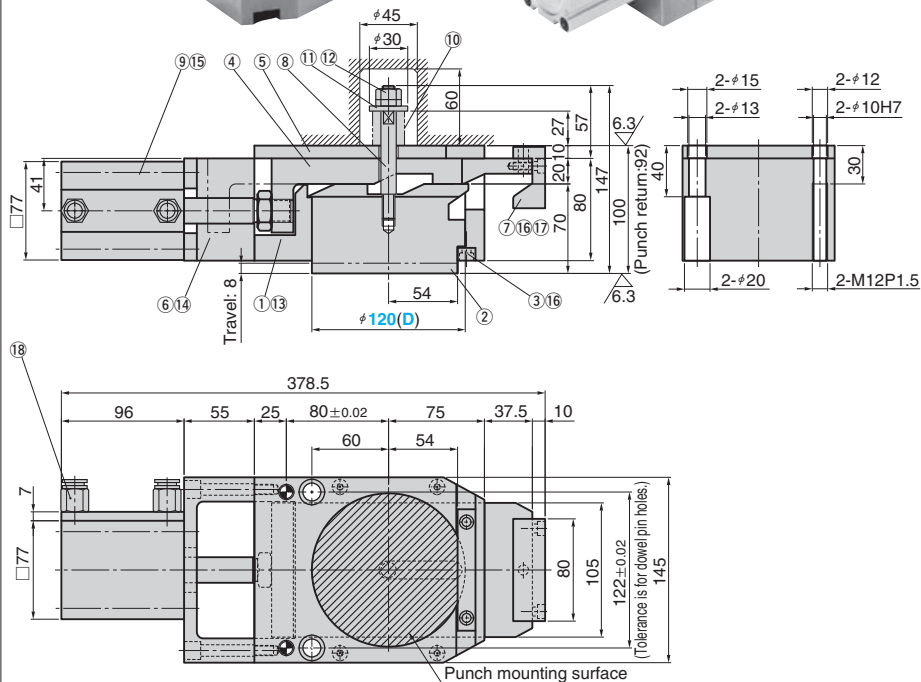
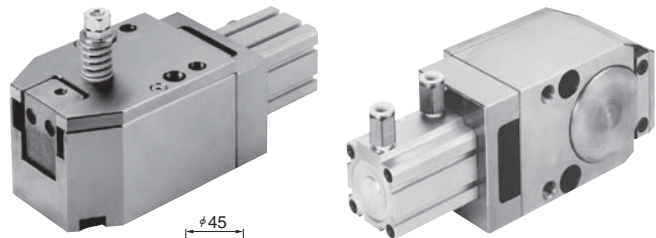
* Performance specifications
 • Unit capacity58.4kN
 • Tooling weight6kg

Removable Punch Retainer Unit

PNEUMATIC

CAD
FILE

SHPUG 120



* Cylinder operation pressure
min 5kg/cm²

Table of Components

No.	Description	Qty	Material and Remark	No.	Description	Qty	Material and Remark
①	Slide Casing	1	S45C HRC25 to 28	⑩	Spring	1	SWOSC-V TF25-45
②	Float Pin	1	S45C	⑪	Washer	1	SS400
③	Key	1	SK3 HRC40 to 45	⑫	Hard Lock Nut	1	S45C for M10
④	Slide Plate	1	S45C HRC55 to 60	⑬	Cross-recessed Head Countersunk Head Screw	2	SCM435 M5×16
⑤	Backing Plate	1	S45C HRC25 to 28	⑭	Hexagon Socket Head Bolt	4	SCM435 M8×55
⑥	Block	1	SS400	⑮	Hexagon Socket Head Bolt	4	SCM435 M8×95
⑦	Positive Return	1	S45C HRC55 to 60	⑯	Hexagon Socket Techno-Bolt	4	SCM435 M6×15
⑧	Stud Bolt	1	SS400	⑰	Dowel Pin with Female Thread	1	φ8×18
⑨	Air Cylinder	1	SSD-L-63-50-N By	⑱	Male Connector	2	GWS10-8 By

⑩ Spring		⑨ Cylinder	Weight	Catalog No.	(D)
Initial Load N	Final Load N	Travel	kg		
218	392	50	25	SHPUG	120



Order

Catalog No. (D)
SHPUG 120



Option

Option Code	Specification
LHC	The accompanying pipe joint is changed to L type (elbow).

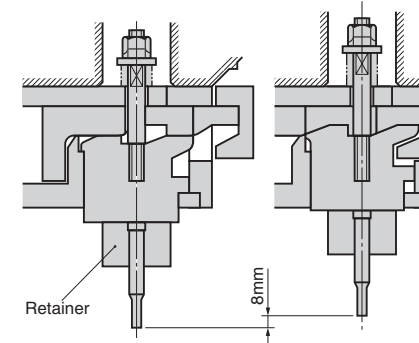


Order

SHPUG120-LHC



Example



⚠ The limit number for joint operation is 4 units. If you want to use the unit in joint operation, please contact our sales representative.

* The air ports can be easily changed by rotating the cylinder mounting position (4 directions).

* Performance specifications
 • Unit capacity164.3kN
 • Tooling weight10kg