

SJPS (Light Load Type)
SJPX (Heavy Load Type)

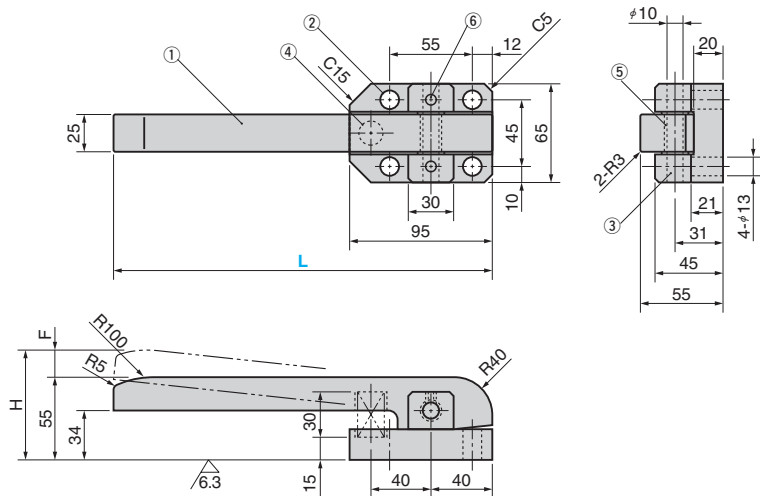
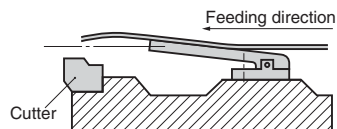


Table of Components

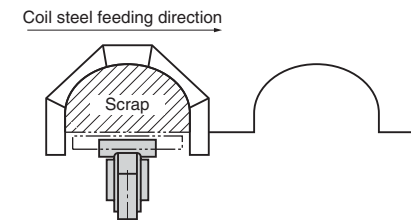
No.	Description	Qty	Material and Remark
①	Support Bar	1	Copper Alloy (SP2)
②	Base Plate	1	FC250
③	Pin	1	S45C(HRC23~28)
④	Spring	1	φ17-40(Light), φ16-40(Heavy)
⑤	Bushing with Flange	2	Drystar BM1010F18
⑥	Hexagon Socket Set Screw	2	SCM435 M6×8

④ Spring	Spring load N		H	F	Weight kg	Catalog No.	L
	Installation	Final					
φ17-40	57	95	73.3	18.3	2.2	SJPS	250
	240	400					250
φ16-40	223	439	85.1	30.1	2.4	SJPX	300

Order

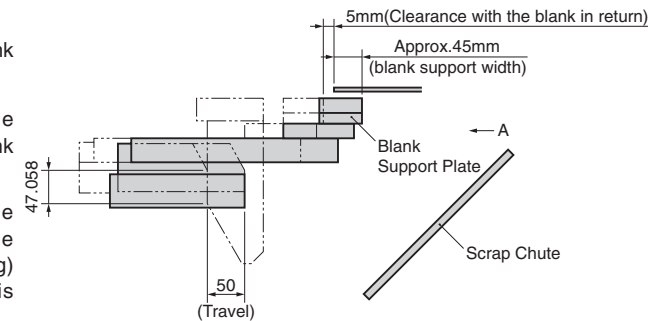


Coil support cam type means:
 Cam type coil support is used when seating space as in a spring type is not available. This corrects deflection of a blank sheet to prevent hitting with a cutter.



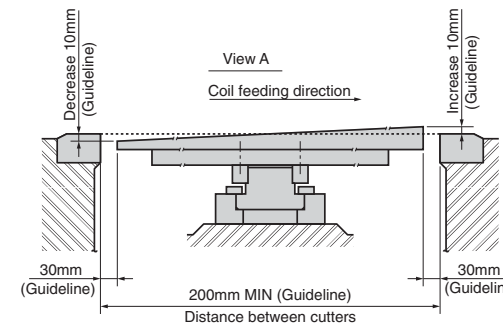
For Operation

- Set the position of the blank and the coil support.
- The guideline for the support width of the blank is 45mm.
- The guideline of the clearance between the blank in return (pressing) and the support plate is 5mm.



Standard for use of Coil Support

- When the distance between cutters is 200mm or more and the spring type coil support cannot be used, use this cam type.
- The guideline of distance between the cutter and the blank support plate is 30mm.



- ▲ The blank support plate should be manufactured by customers according to the blanking die specification.
- 📖 Refer to the next page for the standard table.

STSC

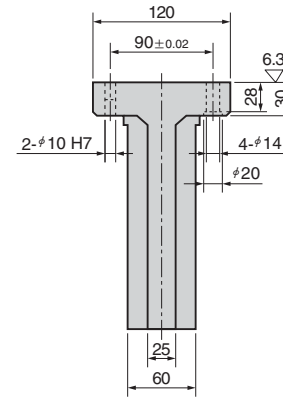
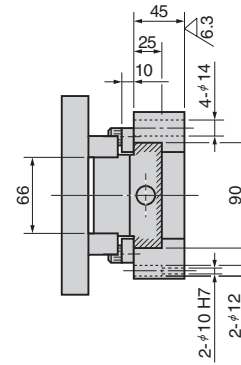
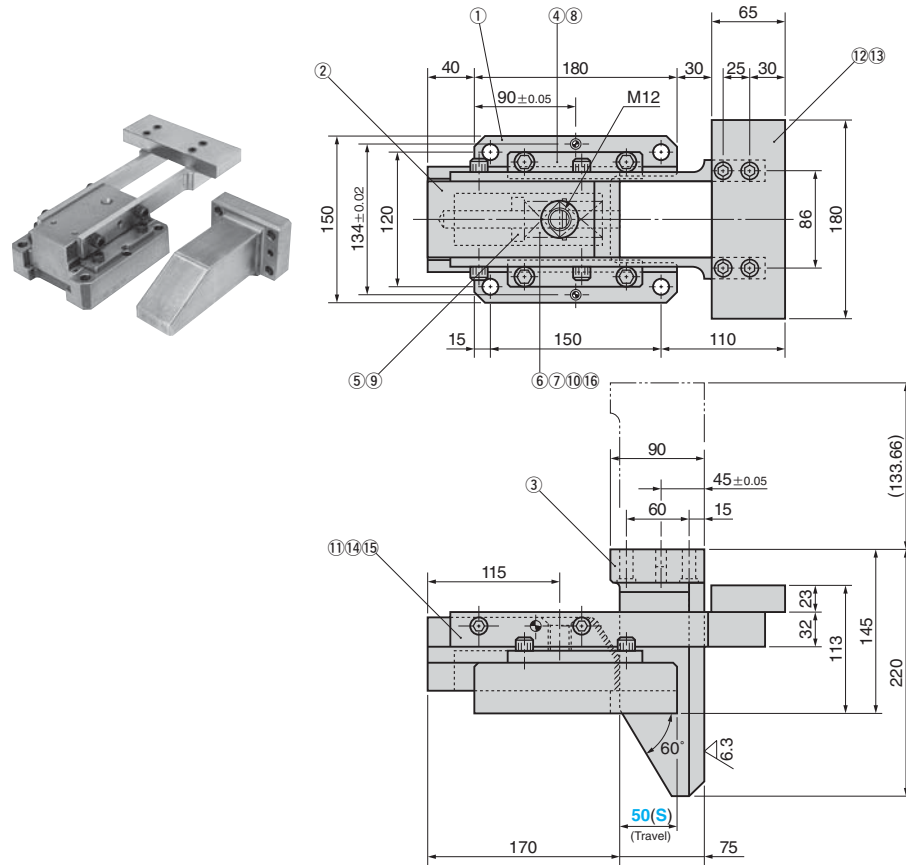
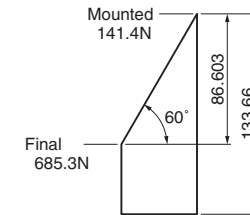


Table of Components

No.	Description	Qty	Material and Remark
①	Base	1	FC250
②	Slider	1	FC250 Oilless Type
③	Driver	1	FC250
④	Upper Plate	2	SS400
⑤	Spring Stopper	1	SS400
⑥	Guide Pin	1	SS400
⑦	Spring	2	SWOSC-V TF30-65
⑧	Hexagon Socket Head Bolt	4	SCM435 M10×25
⑨	Set Screw	1	SCM435 M6×10
⑩	Dowel Pin with Female Thread	1	SUJ2 φ6×30(m6)
⑪	Arm	2	SS400
⑫	Plate	1	SS400
⑬	Hexagon Socket Head Bolt	4	SCM435 M10×40
⑭	Hexagon Socket Head Bolt	4	SCM435 M12×35
⑮	Dowel pin	2	SUJ2 φ10×30
⑯	Washer	1	S45C

Spring force



*Spring used
TF30-65 Spring constant : 21.77N/mm(2.22kgf/mm)



Order

Catalog No.

STSC

(S)

50