

Coil Support

COMPACT TYPE

CAD FILE

CLSPS (Steel Type)
CLSPJ (Resin Type)

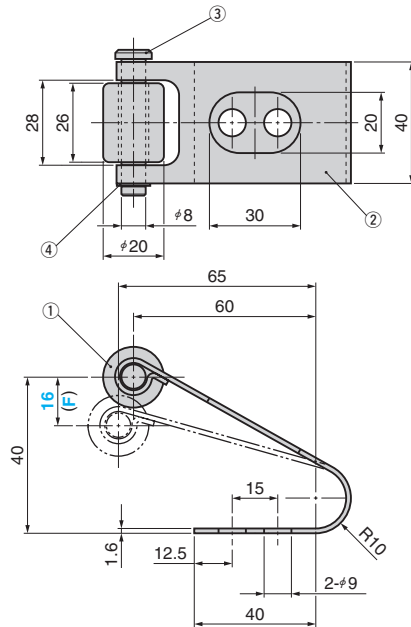


Table of Components

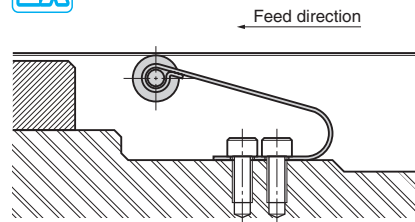
No.	Description	Qty	Material and Remarks
①	Roller (Steel)	1	S45C HRC45 or more
	Roller (Resin)		POM(Polyacetal Resin)
②	Plate Spring	1	SK5
③	Hinge Pin	1	S45C
④	G type Retaining Ring	1	G-8
Accessory	Hexagon Socket Bolt	2	M8×20

*Travel F is max. 16. (Durability assurance range)

*Resin type roller
The core part is made of steel(S45C).

Spring Constant (N/mm (kgf/mm))	Catalog No.	(F) max
8.43(0.86)	CLSPS CLSPJ	16

Order



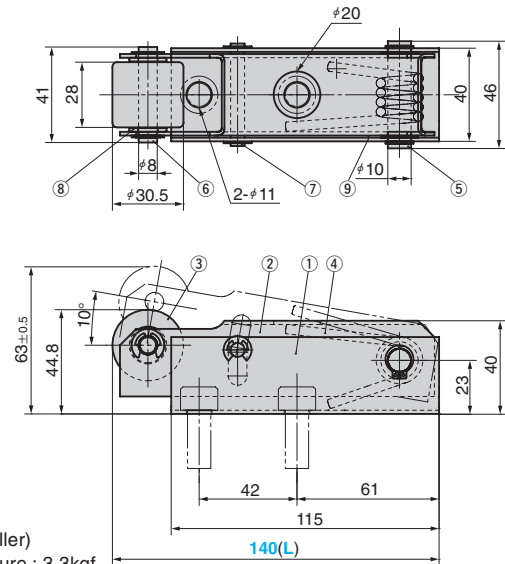
Coil Support

ECONOMY TYPE

NEW

CAD FILE

TAJP



*Load (on roller)
Initial pressure : 3.3kgf
End pressure : 5.0kgf

Table of Components

No.	Description	Qty	Material and Remarks
①	Base	1	SS400
②	Tilt plate	1	SS400
③	Roller	1	SP2(Copper Alloy)
④	Spring	1	SWP-A
⑤	Hinge Pin A	1	S45C
⑥	Hinge Pin A	1	S45C
⑦	Hinge Pin C	1	S45C
⑧	Washer	2	SS400
⑨	Shim	2	SK5

Spring Constant (kgf/deg)	Catalog No.	L
18.84	TAJP	140

Order