

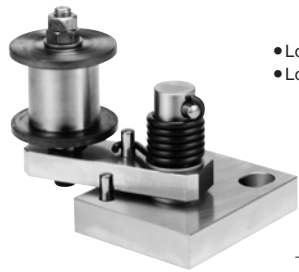
# Guide Roller Set

SWING TYPE

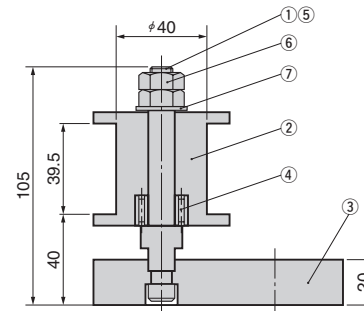
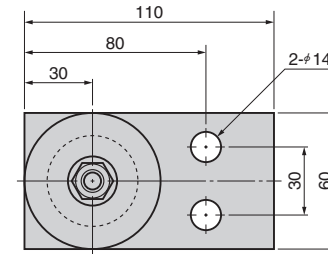
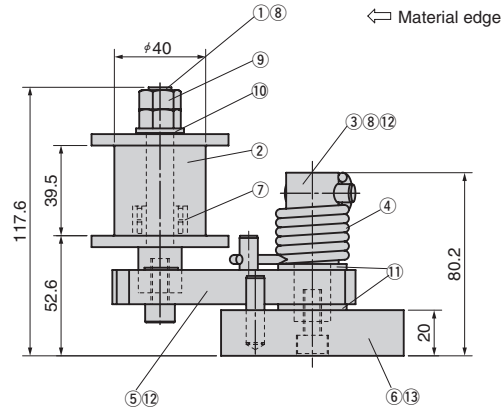
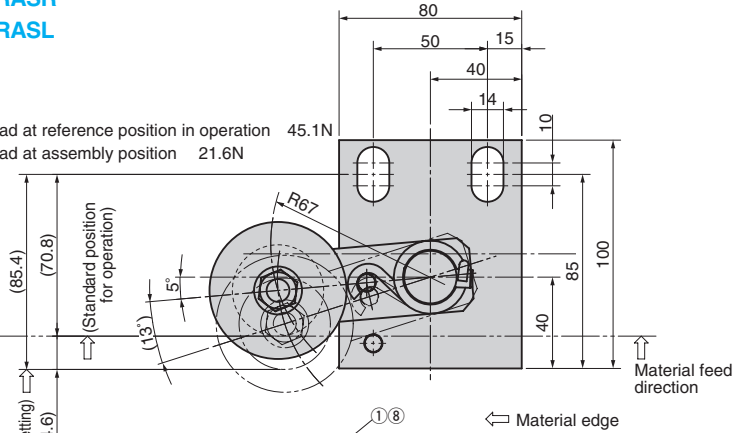
CAD FILE

GRASR  
GRASL

GRBS



- Load at reference position in operation 45.1N
- Load at assembly position 21.6N



## GRASR (L) Table of Components

No.	Description	Qty	Material and Remark
①	Roller Set Pin	1	S45C HRC20 to 30
②	Guide Roller	1	SK5 HRC55 to 60
③	Arm Set Pin	1	SS400
④	Spring	1	SWP-B
⑤	Roller Arm	1	SS400
⑥	Roller Base	1	SS400
⑦	Needle Bearing	1	NAG4901 by IKO
⑧	Hexagon Socket Techno-Bolt	2	SCM435 M8×20
⑨	Hexagon Nut	2	M10
⑩	Washer	1	For M10
⑪	Washer	2	For M16
⑫	Dowel Pin	2	φ8×30
⑬	Dowel Pin Female Thread	1	φ8×30

## GRBS Table of Components

No.	Description	Qty	Material and Remark
①	Roller Set Pin	1	S45C HRC20 to 30
②	Guide Roller	1	SK5 HRC55 to 60
③	Roller Base	1	SS400
④	Needle Bearing	1	NAG4901 by IKO
⑤	Hexagon Socket Techno-Bolt	1	SCM435 M8×20
⑥	Hexagon Nut	2	For M10
⑦	Washer	1	For M10

\*This illustration shows R Type GRASR.



Order

Catalog No.

GRASR



Example

