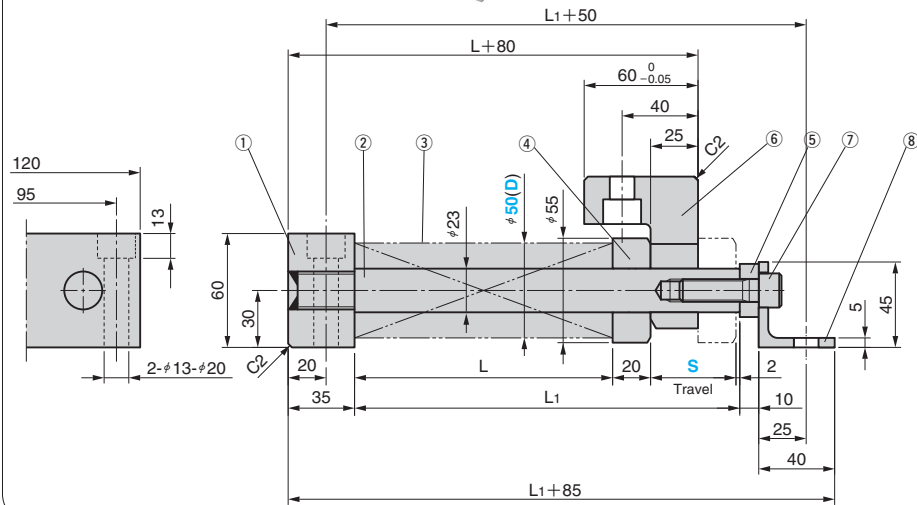


Spring Unit for Cam Return

PARALLEL TYPE

CAD FILE

SHWUL 50 (Light Load)
SHWUM 50 (Intermediate Load)



⚠ Please see installation instruction on P.263

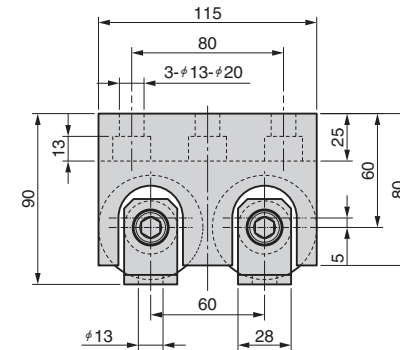


Table of Components

No.	Description	Qty	Material and Remarks
①	Spring Block	1	SS400
②	Spring Guide Pin	2	S45C HRC55 or more
③	Spring	2(4)	Refer to the standard table.
④	Spring Retainer	2	FC250
⑤	Washer	2	SS400
⑥	Return Plate	1	SS400
⑦	Hexagon Socket Head Bolt	2	SCM435 M12×40
⑧	Angle	2	SS400

L	L1	Spring			Catalog No.	(D)	S
		Type(Qty)	Initial Load N(kgf)	Final Load N(kgf)			
68	110	TL50-100(2)	2040 (208.0)		SHWUL	50	20
85	132	TL50-125(2)	2040 (208.0)				25
102	154	TL50-150(2)	2160 (220.2)				30
	159	TL50-150(2)	1456 (148.4)				35
119	181	TL50-175(2)	1536 (156.6)				40
136	203	TL50-200(2)	1596 (162.8)	5400 (550.6)			45
170	242	TL50-250(2)	2040 (208.0)				50
	247	TL50-250(2)	1700 (173.4)				55
204	286	TL50-300(2)	2020 (206.0)				60
	291	TL50-300(2)	1736 (177.0)				65
	296	TL50-300(2)	1456 (148.4)				70

L	L1	Spring			Catalog No.	(D)	S
		Type(Qty)	Initial Load N(kgf)	Final Load N(kgf)			
93	135	TM50-125(2)	2940 (299.8)		SHWUM	50	20
111	158	TM50-150(2)	2857 (291.4)				25
149	201	TM50-200(2)	3215 (327.8)				30
168	225	TM50-225(2)	2993 (305.2)				35
186	248	TM50-250(2)	2940 (299.8)				40
224	291	TM50-300(2)	3160 (322.2)	7840 (800.0)			45
261	333	TM50-350(2)	3409 (347.6)				50
	338	TM50-350(2)	2972 (303.0)				55
298	380	TM50-200(4)	3980 (405.8)				60
	385	TM50-200(4)	3597 (366.8)				65
334	426	TM50-225(4)	3809 (388.4)				70



Order

Catalog No.	(D)	-	S
SHWUL	50	-	60
SHWUM	50	-	30

⚠ Both SHWUL and SHWUM are made to order.

