

Spring Unit For Cam Return

PRE-LOADED TYPE

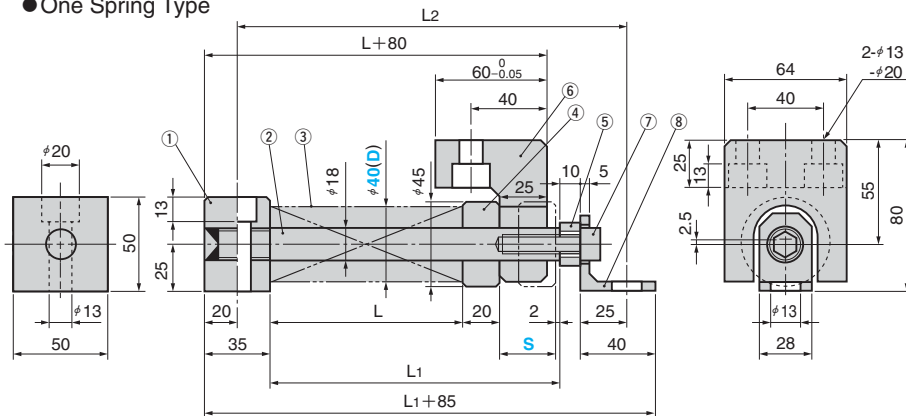
CAD FILE

SHSUL 40
SHSUM 40

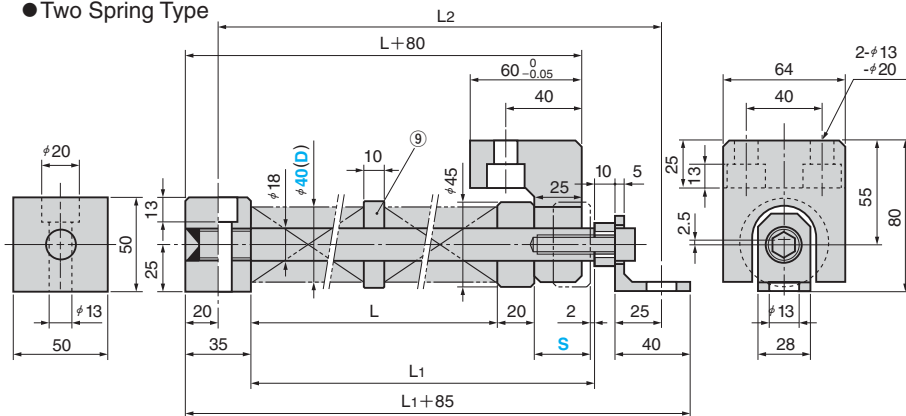


⚠ Please see installation instruction on P.263

● One Spring Type



● Two Spring Type



■ Table of Components

No.	Description	Qty	Material and Remark
①	Spring Block	1	SS400
②	Spring Guide Pin	1	S45C Hardness: HRC55 or more
③	Spring	1(2)	Refer to the standard table.
④	Spring Retainer	1	FC250
⑤	Washer	1	SS400

No.	Description	Qty	Material and Remark
⑥	Return Plate	1	SS400
⑦	Hexagon Socket Head Bolt	1	SCM435 M12×40
⑧	Angle	1	SS400
⑨	Collar	1	FC250

Spring Type(Qty)	Load N(kgf)		L	L ₁	L ₂	Catalog No.	(D)	S
	min	max						
TL40-100(1)	635(164.8)		68	110	160			20
TL40-125(1)	632(164.4)		85	132	182			25
TL40-150(1)	635(164.8)		102	154	204			30
TL40-150(1)	459(146.8)		102	159	209			35
TL40-175(1)	485(149.5)		119	181	231			40
TL40-200(1)	503(151.3)		136	203	253			45
TL40-250(1)	647(166.0)		170	242	292			50
TL40-250(1)	539(155.0)		170	247	297			55
TL40-150(2)	627(163.9)	1,695 (172.8)	214	296	346	SHSUL	40	60
TL40-150(2)	547(155.8)		214	301	351			65
TL40-175(2)	633(164.5)		248	340	390			70
TL40-175(2)	562(157.3)		248	345	395			75
TL40-200(2)	635(164.8)		282	384	434			80
TL40-200(2)	568(157.9)		282	389	439			85
TL40-200(2)	503(151.3)		282	394	444			90
TL40-200(2)	436(144.5)		282	399	449			95
TL40-250(2)	647(166.0)		350	472	522			100
TL40-250(2)	593(160.5)		350	477	527			105
TL40-250(2)	539(155.0)		350	482	532			110
TM40-125(1)	940(95.8)		93	135	185			20
TM40-150(1)	914(93.2)		111	158	208			25
TM40-200(1)	1027(104.7)		149	201	251			30
TM40-225(1)	957(97.6)		168	225	275			35
TM40-250(1)	938(95.7)		186	248	298			40
TM40-300(1)	1012(103.2)		224	291	341			45
TM40-175(2)	1119(114.1)	2510 (255.9)	270	342	392	SHSUM	40	50
TM40-175(2)	979(99.9)		270	347	397			55
TM40-200(2)	1027(104.7)		308	390	440			60
TM40-200(2)	905(92.3)		308	395	445			65
TM40-225(2)	1001(102.1)		344	436	486			70
TM40-250(2)	1039(106.0)		382	479	529			75
TM40-250(2)	941(96.0)		382	484	534			80



Order

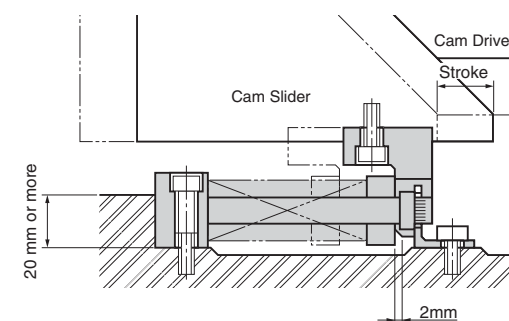
Catalog No.	(D)	—	S
SHSUL	40	—	50
SHSUM	40	—	30



Type with travel S of 55 or more is made to order.



Example



Spring Unit For Cam Return

PRE-LOADED TYPE

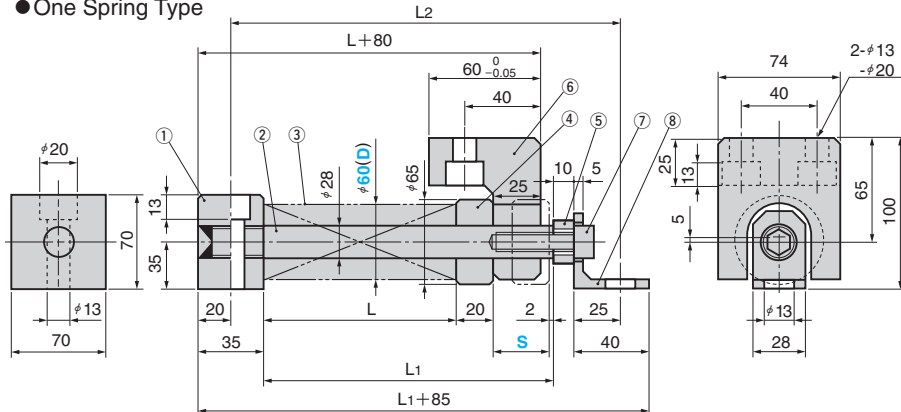
CAD FILE

SHSUL 60
SHSUM 60

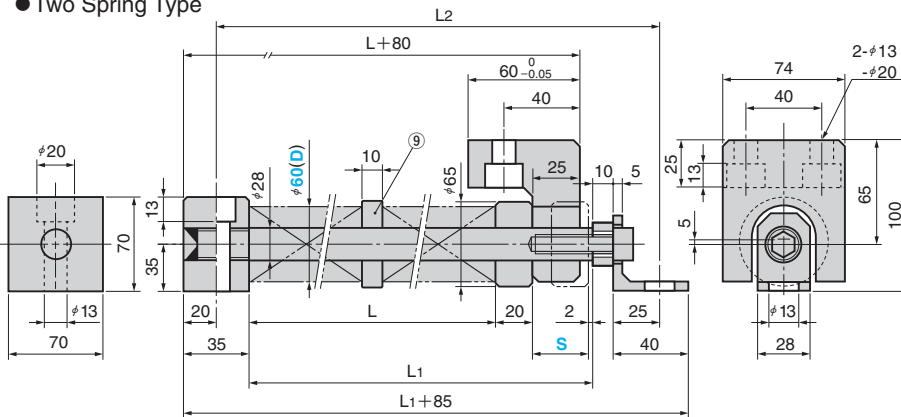


⚠ Please see installation instruction on P.263

● One Spring Type



● Two Spring Type



■ Table of Components

No.	Description	Qty	Material and Remark
①	Spring Block	1	SS400
②	Spring Guide Pin	1	S45C Hardness: HRC55 or more
③	Spring	1(2)	Refer to the standard table.
④	Spring Retainer	1	FC250
⑤	Washer	1	SS400

No.	Description	Qty	Material and Remark
⑥	Return Plate	1	SS400
⑦	Hexagon Socket Head Bolt	1	SCM435 M12×40
⑧	Angle	1	SS400
⑨	Collar	1	FC250

Spring Type(Qty)	Load N(kgf)		L	L ₁	L ₂	Catalog No.	(D)	S
	min	max						
TL60-100(1)	1464(149.3)		68	110	160			20
TL60-125(1)	1455(148.4)		85	132	182			25
TL60-150(1)	1458(148.7)		102	154	204			30
TL60-150(1)	1053(107.4)		102	159	209			35
TL60-175(1)	1104(112.6)		119	181	231			40
TL60-200(1)	1159(118.2)		136	203	253			45
TL60-250(1)	1470(149.9)		170	242	292			50
TL60-250(1)	1225(124.9)		170	247	297			55
TL60-300(1)	1476(150.5)		204	286	336			60
TL60-300(1)	1271(129.6)		204	291	341			65
TL60-300(1)	1066(108.7)		204	296	346			70
TL60-175(2)	1276(130.1)		248	345	395			75
TL60-200(2)	1464(149.3)		282	384	434			80
TL60-200(2)	1331(135.7)	3890 (396.7)	282	389	439	SHSUL	60	85
TL60-200(2)	1159(118.2)		282	394	444			90
TL60-200(2)	1006(102.6)		282	399	449			95
TL60-250(2)	1470(149.9)		350	472	522			100
TL60-250(2)	1347(137.4)		350	477	527			105
TL60-250(2)	1225(124.9)		350	482	532			110
TL60-250(2)	1103(112.5)		350	487	537			115
TL60-300(2)	1476(150.5)		418	560	610			120
TL60-300(2)	1373(140.0)		418	565	615			125
TL60-300(2)	1271(129.6)		418	570	620			130
TL60-300(2)	1168(119.1)		418	575	625			135
TL60-300(2)	1066(108.7)		418	580	630			140
TL60-300(2)	963(198.2)		418	585	635			145
TL60-300(2)	861(187.9)		418	590	640			150
TM60-125(1)	2116(215.7)		93	135	185			20
TM60-150(1)	2057(209.7)		111	158	208			25
TM60-200(1)	2313(235.9)		149	201	251			30
TM60-225(1)	2154(219.6)		168	225	275			35
TM60-250(1)	2114(215.6)		186	248	298			40
TM60-300(1)	2275(232.0)		224	291	341			45
TM60-350(1)	2454(250.2)	5640 (575.0)	261	333	383	SHSUM	60	50
TM60-350(1)	2139(218.1)		261	338	388			55
TM60-200(2)	2864(292.1)		298	380	430			60
TM60-200(2)	2589(264.0)		298	385	435			65
TM60-225(2)	2741(279.6)		334	426	476			70
TM60-250(2)	2775(283.0)		372	469	519			75
TM60-250(2)	2555(260.6)		372	474	524			80



Order

Catalog No.	(D)	—	S
SHSUL	60	—	80
SHSUM	60	—	50

⚠ Type with travel S of 55 or more is made to order.