

# Cam Side Block

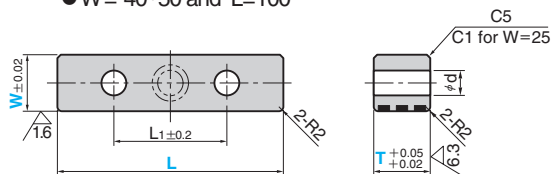
FC AND BRONZE TYPE

Addition

CAD FILE

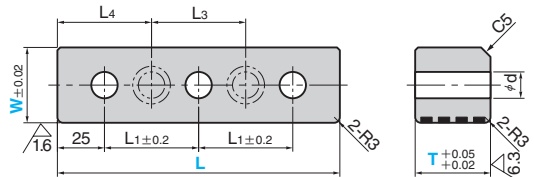
MCSRG (FC Type)  
MCSRW (Bronze Type)

- W = 25 (MCSRG Only)
- W = 40·50 and L = 100

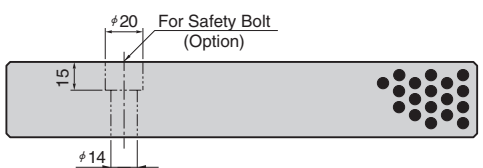
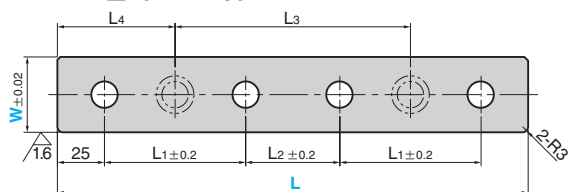


\*Holes for safety bolt are optional for W=40 and 50 only.

- W ≥ 40 L = 150 and 200



- W ≥ 40 L = 250



● Sliding Direction



Material  
MCSRG FC250 with Graphite  
MCSRW Bronze with Graphite(SP2)



Option

Option Code	Specification
ZA	Bolt holes to prevent falling of cam side block are drilled. W=40 and 50 only.

● Bolt Position

L	L3	L4
150	50	50
200	75	62.5
250	125	62.5



Order MCSRG 50 - 200 - 45-ZA

L1	L2	d	Catalog No.	W	L	T
45			MCSRG	25	75	
50		11			100	25
75					125	
100					150	
50			MCSRG	40	100	
75		14			150	30
50	50				200	
75					250	
50			MCSRW	50	100	
75		20			150	45
50	50				200	
75					250	
50			MCSRW	50	150	55
75		20			200	
50	50				250	60
75					150	
50			MCSRW	50	200	70
75		20			250	
50	50				250	



Order

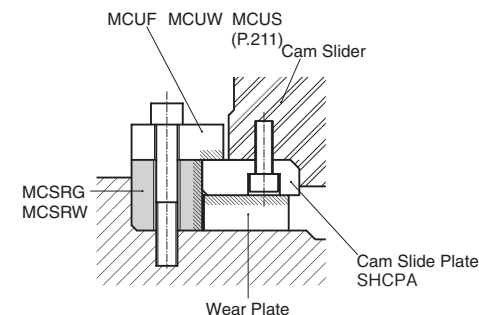
Catalog No. MCSRG 40 - 200 - 30



Example

● When this block is used together with cam slide plate or wear plate.

Wear Plate Thickness	MCSRG Thickness T	Cam Slide Plate Thickness
10	30	20
	45	35
	60	50
20	40	20
	55	35
	70	50



■ We are ready to accept requests or orders for special parts.