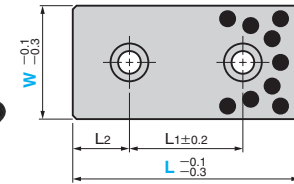


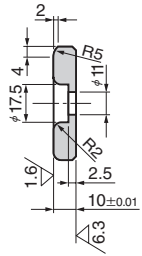
TSP



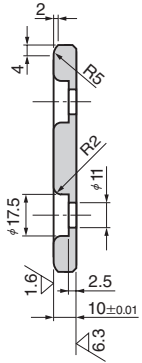
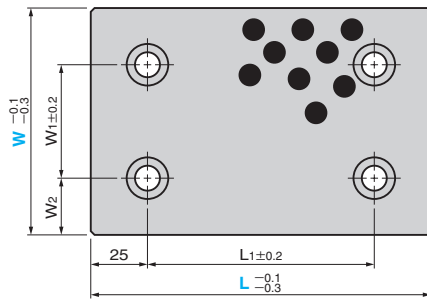
● W = 28 to 75



\*R2 only for W=28



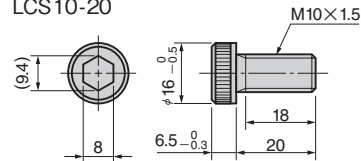
● W = 100 or more



● Sliding Direction



● Special brazier head bolt (LCS standard) LCS 10-20



Material : SKS3 with Graphite  
 Hardness : HRC 45 to 55  
 Accessory : Mounting Bolt  
 (Special Brazier Head Bolt)

W <sub>1</sub>	W <sub>2</sub>	L <sub>1</sub>	L <sub>2</sub>	Catalog No.	W	L
		45	15			75
		50			28	100
		75	25			125
		100				150
		45	15			75
		50			38	100
		75	25			125
		100				150
		45	15			75
		50		TSP	48	100
		75				125
		100				150
		25	25			75
		50			75	100
		75				125
		100				150
		50				100
	50	75			100	125
		100				150
		150				200
		75				125
	37.5	100			125	150



Order

Catalog No. **TSP**    W **75** - L **150**