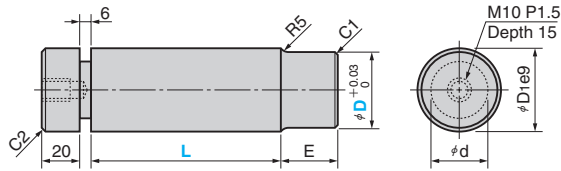


# Side Pin Set

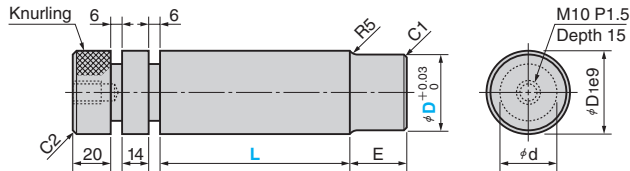
FOR PAD RETENTION



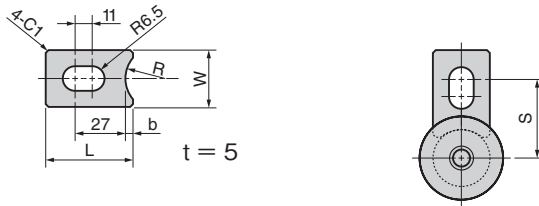
**SPAT**  
(Single Type)



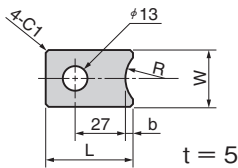
**SPBT**  
(Double Type)



**STPT 1** (Stopper Type **T**)  
**STPT 2** (Stopper Type **T**)  
(Oblong Hole Type)



**STPM 1** (Stopper Type **M**)  
**STPM 2** (Stopper Type **M**)  
(Round Hole Type)



Material Side Pin S45C(HRC20~25) Stopper SS400  
Surface Treatment Black oxide Black oxide

D1 e9	d	E	S	Allowable Load N (kgf)		Catalog No.	D	L
				Impact and Repeated Load Safety Factor 40	Static Load Safety Factor 5			
22	-0.040 -0.092	14	35	581 (59)	4650 (474)		20	40
								60
								80
32		20	38	1962 (200)	15692 (1600)		30	60
								80
								100
42	-0.050 -0.112	30	43	4650 (474)	37196 (3793)	<b>SPAT</b>	40	60
								80
								100
52		40	48	9081 (926)	72649 (7408)	<b>SPBT</b>	50	80
								100
								120
62	-0.060 -0.134	50	53	15692 (1600)	125538 (12801)		60	100
								120
								140
72		60	58	24919 (2541)	199350 (20328)		70	120
								140
								160

## Stopper

Side Pin D	Stopper				Catalog No.
	W	L	R	b	
20					<b>STPT1</b> <b>STPM1</b>
30	30	46	20	4	
40					
50					<b>STPT2</b> <b>STPM2</b>
60	50	49	35	7	
70					

In case of set order (Side pin and stopper), stopper type to be added in the end

STPT1 • STPT2 .....Type T

STPM1 • STPM2 .....Type M



Order

Catalog No.	D	L	Stopper Type
<b>SPAT</b>	40	80	
<b>SPAT</b>	50	100	<b>M</b>