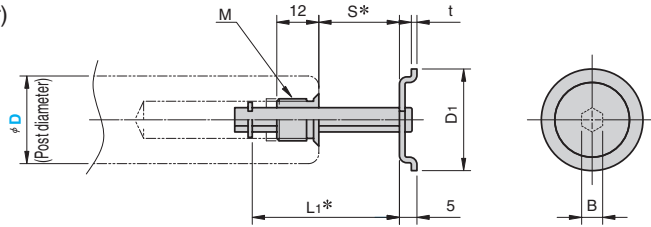


Guide Post Set Components

FOR DIE SET

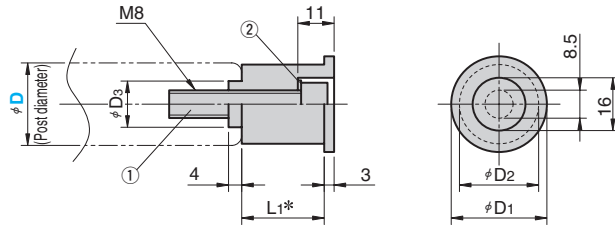
MSS (Movable Stopper)



*S and L1 vary depending on the ball slider length, See the table below.

Material : Main unit S45C
Support plate SPC-1
Surface treatment : Black oxide

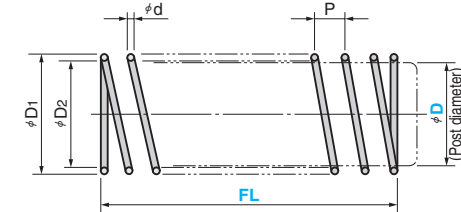
FSSN (Fixed Stopper)



*L1 vary depending on the ball slider length, See the table below.

Material :S45C
Surface treatment :Black oxide
Accessories ① Mounting bolt
② Spring washer

RSS (Spring)



Material : SWP2

D	D1	D2	d	P
25	27.9	25.5	1.2	14
28	31.3	28.5	1.4	16
32	35.7	32.5	1.6	16
38	42.5	38.5	2.0	18
50	55.7	50.5	2.6	20
60	66.9	60.5	3.2	20

Guideline for selection of spring length FL

Guide Post Type	Without Stopper	With Stopper
Press-fit guide post	FL = Post length - Ball slider length/2	FL ≙ (Post length - Ball slider length/2) × 1.1
Removable guide post	FL = Post length - (Ball slider length/2 + collar thickness)	FL ≙ {Post length - (Ball slider length/2 + collar thickness)} × 1.1

Spring adhesion length (Lm)

$$Lm \div \frac{\text{Free length} \times \text{Wire diameter}}{\text{Pitch}} + 2 \times \text{Wire diameter}$$

Catalog No.	D	FL (Increments of 10 mm)
RSS	25	40 ~ 90
		100 ~ 150
		160 ~ 200
		210 ~ 260
		280 ~ 330

Catalog No.	D	FL (Increments of 10 mm)
RSS	32	70 ~ 140
		150 ~ 190
		200 ~ 220
		230 ~ 260
		280 ~ 330

Catalog No.	D	FL (Increments of 10 mm)
RSS	50	80 ~ 140
		150 ~ 190
		200 ~ 240
		250 ~ 300
		300 ~ 350



Order

Catalog No. **RSS** D **32** - FL **160**

D1	D2	D3	B	t	M×P	Catalog No.	D	Ball slider length L
29	24						25	60 75
33	27	14	6	1.6	M12×1.5	MSS (Movable stopper)	28	60 75
37	31						32	75 90
44	37					FSSN (Fixed stopper)	38	75 90
56	49	20	8	2.0	M16×1.5		50	90 110
66	59						60	90 110

Ball slider length	MSS		FSSN	
	S	L1	L1	Mounting bolt
60	0~23	35	20	M8×35
75	0~30	42	25	M8×40
90	0~37	49	30	M8×45
110	0~47	59	35	M8×50



Order

Catalog No. **MSS** D **32** - L **90**