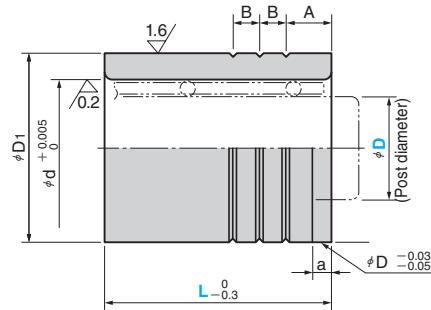


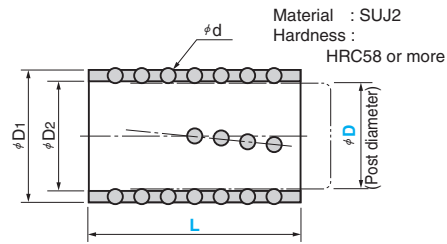
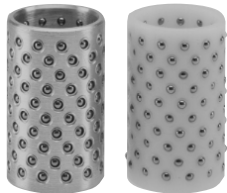
# Guide Post Set Components

FOR DIE SET AND OPTION

**BLB** (Ball Guide Bushing, Locktite Type)



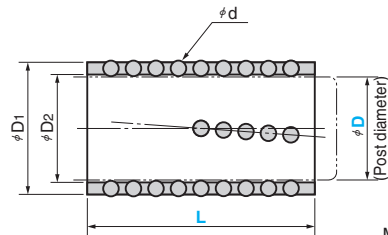
**BSA** (Aluminum Ball Slider)  
**BSJ** (Resin Ball Slider)



Material : SUJ2  
Hardness : HRC58 or more

Material :  
BSA A5052S  
BSJ POM (Polyacetal)

**BSAH** (Highly Rigid Aluminum Ball Slider)  
**BSJH** (Highly Rigid Resin Ball Slider)



Material :  
BSAH A5052S  
BSJH POM (Polyacetal)

D1	Tolerance	d	A	B	a	Catalog No.	D	L	
45	$0$	31	10	6	4	BLB	25	60	80
50	$-0.007$	36	12	7	5		28	60	80
55	$0$	40					32	80	100
64	$-0.008$	48					38	80	100
83	$0$	60	15	10	6		50	100	120
95	$-0.010$	70				60	100	120	

D1	D2	d	Catalog No.	D	L	
30.5	25.5	3	BSA BSJ	25	60	75
35.5	28.5	4		28	60	75
39.5	32.5	5	BSAH	32	75	90
47.5	38.5		BSJH	38	75	90
59.5	50.5			50	90	110
69.5	60.5			60	90	110



Order

Catalog No.	D	-	L
BLB	32	-	100
BSA	32	-	90



Option

## Change of Ball Slide

-H  
(BSAH,  
BSJH)



-H

The ball slider of the standard guide post set (page 143 to 146) is changed to a highly rigid type.



Order

Catalog No.	D	-	L	-	BL	-	FL	-	Option code
SAA	32	-	180	-	100	-	150	-	H