

Guide Post

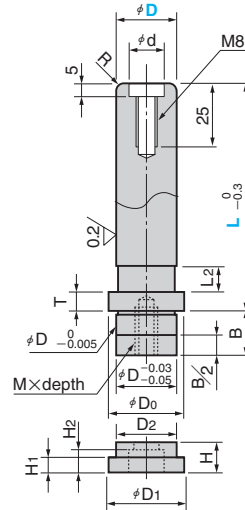
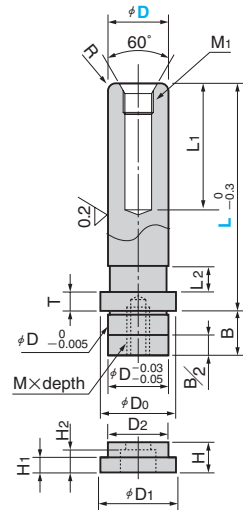
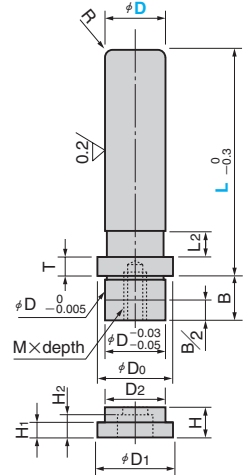
DIE SETTING, REMOVABLE TYPE

CAD FILE

DGP
DGPL (1 mm Increment
Type for Dimension L)

DGPM
DGPML (1 mm Increment
Type for Dimension L)
For Movable Stopper

DGPF
DGPFL (1 mm Increment
Type for Dimension L)
For Fixed Stopper



Material : SUJ2 Hardness : HRC58 or more (induction hardening)

D Tolerance	D ₀	D ₁	D ₂	L ₁	M ₁ ×P	d	R	T	B	L ₂	M×Depth	H	H ₁	H ₂	Accompanying Bolt
25 +0.020 +0.015	36	35	24.5	50	M12×1.5	14	3.0	8	18	10	M 8×18	14	7	8.5	M 8×25
28 +0.025 +0.020	39	36	27.5	60			3.5	10	20	23	12	M10×22	16	8	10.5
32 +0.030 +0.025	44	40	31.5	70	M16×1.5	20	4.0	12	27	15	M12×27	18	10	12.5	M12×35
38 +0.035 +0.030	53	49	37.5	80			5.0	15	35	42	15	M14×31	20	12	14.5

Catalog No.	D	L			
DGP DGPM DGPF	25	80	90	100	
		110	120	130	
	28	100	110	120	130
		140	150	160	
32	120	130	140		
	150	160			
38	140	150	160		
	170	180			
50	160	170			
	180	200			
60	160	170			
	180	200			

Catalog No.	D	L Increments of 1 mm
DGPL	25	60 ~ 100
		101 ~ 130
		131 ~ 160
		161 ~ 200
DGPL	28	60 ~ 130
		131 ~ 160
		161 ~ 200
		201 ~ 240
DGPL	32	60 ~ 140
		141 ~ 160
		161 ~ 200
		201 ~ 240
DGPL	38	60 ~ 160
		161 ~ 180
		181 ~ 200
		201 ~ 240
DGPL	50	241 ~ 260
		60 ~ 170
		171 ~ 200
		201 ~ 260
DGPL	60	60 ~ 170
		171 ~ 200
		201 ~ 260
		201 ~ 260

Catalog No.	D	L Increments of 1 mm
DGPML DGPFL	25	80 ~ 100
		101 ~ 130
		131 ~ 160
		161 ~ 200
DGPML DGPFL	28	80 ~ 130
		131 ~ 160
		161 ~ 200
		201 ~ 240
DGPML DGPFL	32	100 ~ 140
		141 ~ 160
		161 ~ 200
		201 ~ 240
DGPML DGPFL	38	100 ~ 160
		161 ~ 180
		181 ~ 200
		201 ~ 240
DGPML DGPFL	50	120 ~ 170
		171 ~ 200
		201 ~ 260
		201 ~ 260
DGPML DGPFL	60	120 ~ 170
		171 ~ 200
		201 ~ 260
		201 ~ 260



Order

Catalog No.	D	L
DGP	28	160
DGPL	60	250