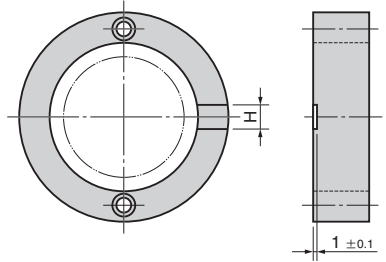


Options

ALTERNATIVE METHODS

■ Groove Machining

-TN (Applicable to HBF and HBH, HBFS, HBHS)



D	H
25~32	10
38~80	15

-TN

A groove to check the dead bottom center is machined.

Order	Catalog No.	D	H1	Safety color	Option code
	HBF	50	35	Y	TN

■ Machining for Standard Chain Installation

-S (Applicable to HBHS, HBFS, HBS and HBW)

HBHS·HBFS

HBS·HBW



* Mounting bolts (2) attached

* Mounting bolts (2) attached

-S

A height block is connected to a stock with a chain.

Order	Catalog No.	D	H1	Safety color	H2	Safety color	Option code
	HBHS	38	25	R	20	Y	S
	HBS	32	25	N	25	R	S

■ Machining for Installation of Heavy-Duty Chain

-HS (Applicable to HBHS, HBFS, HBS, HBW, SB, SBH, SBF)



⚠ Dimension H1, H2 shall be applied to 20mm over.

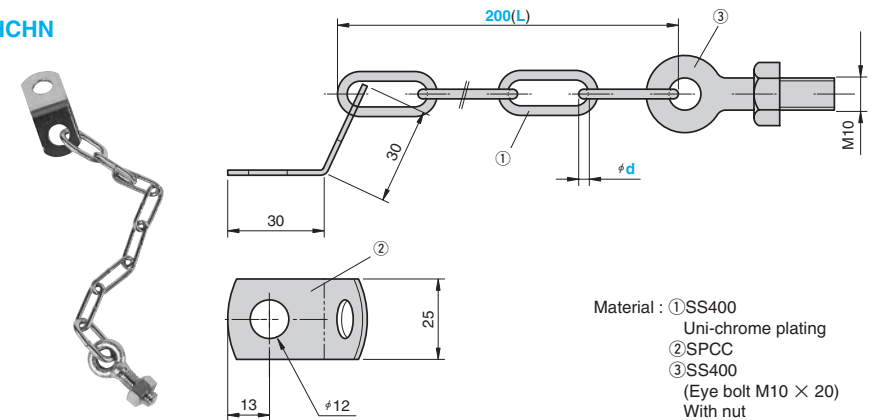
-HS

A height block is connected to a stock with a strong chain.

Order	Catalog No.	D	H1	Safety color	H2	Safety color	Option code
	HBHS	38	25	R	20	Y	HS
	HBS	32	25	N	25	R	HS

■ Heavy-Duty Chain

HCHN



Material : ①SS400
Uni-chrome plating
②SPCC
③SS400
(Eye bolt M10 × 20)
With nut

Catalog No.	d	(L)
HCHN	3	200

Order	Catalog No.	d	(L)
	HCHN	3	200