

Guide Bushing

FOR HOLDER TYPE GUIDE POST SET

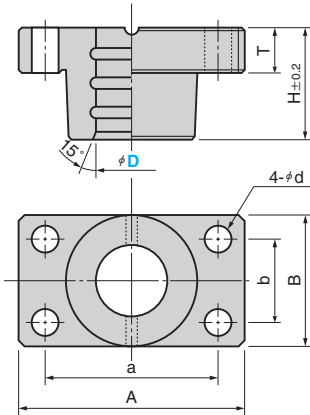
CAD
FILE

Plain Type

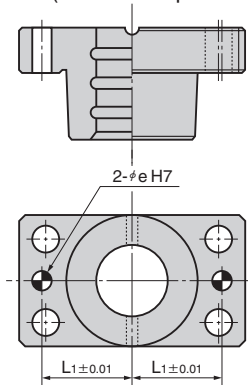


* Mounting bolts (4) and dowel pins (2) are attached.

SGB



SGBN (With dowel pin hole)



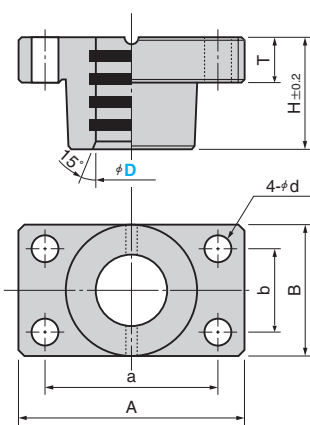
Material: FC250

Oilless Plain Type

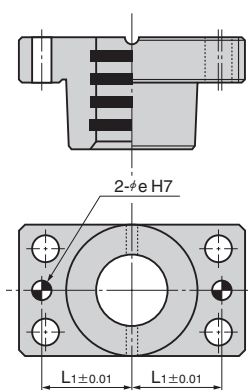


* Mounting bolts (4) and dowel pins (2) are attached.

SGRB



SGRBN (With Dowel Pin Hole)



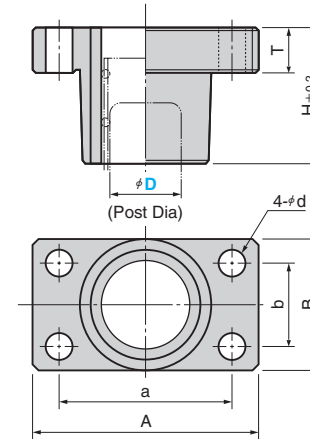
Material: FC250
with Graphite

Ball Guide Type

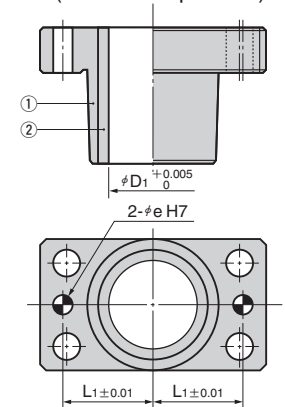


* Mounting bolts (4) and dowel pins (2) are attached.

BGB



BGBN (With dowel pin hole)



Material: ①FC250 ②SUJ2
HRC58 or more

A	a	B	b	D ₁	H	T	d	L ₁	e H7	Accessories		Catalog No.	D
										Bolt	Dowel pin		
84	66	48	30	31	50	20	9	33	8	M 8×35	φ 8×30	BGB BGBN	25
100	76	58	36	40	60		11	38		+0.015/0			M10×40
130	100	75	44	48	70	25	14	62.5	10	M10×45	38		
155	125	90	60	60	90		18	75		+0.018/0	M12×50		50
190	150	120	80	70	100	30	18	75	13	M16×60	φ13×50		60



Order

Catalog No.	D
SGB	38
BGBN	50



Option

Option Code	Specification
W	Tapped hole for the height block is drilled on the guide bushing.
BM	Tapped hole for lifting bolt is drilled on the guide bushing. (D=25~50only)



Order

SGB 38 - W



See page 116~ for option details.

A	a	B	b	H	T	d	L ₁	e H7	Accessories		Catalog No.	D Tolerance
									Bolt	Dowel pin		
84	66	48	30	45	20	9	33	8	M 8×35	φ 8×30	SGB SGBN SGRB SGRBN	25 +0.041 +0.031
100	76	58	36	50		11	38		+0.015/0			M10×40
130	100	75	44	60	25	14	62.5	10	φ10×40	38 +0.049 +0.037		
155	125	90	60	85		18	75		+0.052 +0.037	M12×50		50
190	150	120	80	100	30	18	75	13	φ13×50		60 +0.061 +0.043	
230	180	150	110	130	35	22	95	16	φ16×60		80 +0.063 +0.043	