

Guide Post Set

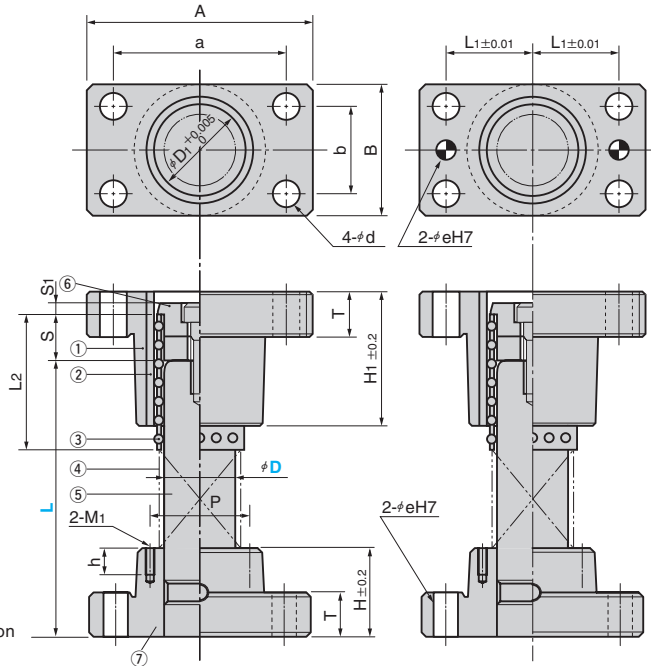
FIXED STOPPER AND ALUMINUM BALL SLIDER TYPE

CAD FILE

For selection criteria of the guide post length (effective movable range of ball slider), refer to pages from 123.



SGK
SGKL (Type for Dimension L)
SGKN
SGKNL (Type for Dimension L)



Tapped holes (2-M1) on Dia. φ38 and over.

Table of Components

No.	Description	Qty	Material and Remark	Catalog No.
①	Guide Bushing	1	FC250	BGB BGBN
②	Inner Bushing	1	SUJ2 Induction hardening HRC58 or more	
③	Ball Slider	1	A50528	BSA
④	Spring	1	SWP2	RSS
⑤	Guide Post	1	SUJ2 Induction hardening HRC58 or more	BGPF
⑥	Movable Stopper	1	S45C	GPH GPHN
⑦	Guide Holder	1	FC250	
Accessories	Hexagon Socket Head Bolt	8	SCM435	
	Dowel Pin with Female Thread	4	SUJ2 Tolerance m6	

Accessories

D	Hexagon Socket Head Bolt	Dowel Pin
25	M 8×35	φ 8×30
32	M10×40	
38	M10×45	φ 10×40
50	M12×50	
60	M16×60	φ 13×50

D Tolerance	D ₁	A	a	B	b	T	H	P	M ₁	h	H ₁	d	L ₂	S	S ₁	L ₁	e	H7	
25	+0.024 +0.015	31	84	66	48	30	20	30	-	-	50	9	50	20	5	33	8		
32		40	100	76	58	36		40	-	-	60	11	60	25	5	38		+0.015 0	
38	+0.028 +0.017	48	130	100	75	44	25	50	60	M5	15	70	30	10	50	10			
50		60	155	125	90	60		65	72	M6	-	90	14	90	40	62.5	10		
60	+0.033 +0.020	70	190	150	120	80	30	75	92	M8	20	100	18	100	50	15	75	13	+0.018 0

Catalog No.	D	L
25	90 100 110 120 130 140 150 160 170 180 200	
32	110 120 130 140 150 160 170 180 200 220 240 260	
38	130 140 150 160 170 180 200 220 240 260 300	
50	170 180 200 220 240 260 300 350	
60	200 220 240 260 300 350	

Catalog No.	D	L
25	90~200	
32	110~260	
38	130~300	
50	170~350	
60	200~350	

Order	Catalog No.	D	L
	SGK	60	350
	SGKL	50	320

Option See page 116~ for option details.

Option Code	Specification
C	Dowel pin hole for location is drilled at the center of the guide post.
M	Tapped hole for the height block is drilled on the guide holder. (D=25, 32 only)
RH	Guide holder is changed to the inverted mounting type.
RB	Guide bushing is changed to the inverted mounting type.
RHB	Both guide bushing and holder are changed to the inverted mounting type.
HK	Guide holder height is machined to the tolerance of ±0.1.
BK	Guide bushing height is machined to the tolerance of ±0.1.
HBK	Both guide holder and bushing heights are machined to the tolerance of ±0.1.
BM	Tapped hole for lifting bolt is drilled on the guide bushing. (D=25~50only)
HM	Tapped hole for jack screw is drilled on the guide bushing. (D=25~50only)

Order	SGKL 32 - 210 - C - HBK