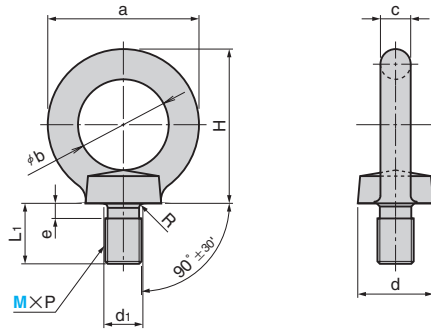


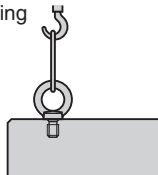
# Eye Bolt

LIFTING TYPE

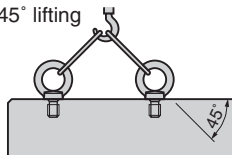
LEB



•Vertical lifting



•45° lifting



Material: SS400  
Bolt accuracy: JIS 1168

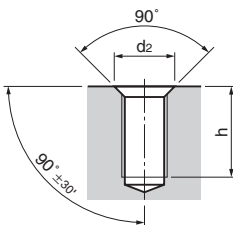
M × P	a	b	c	d	H	L <sub>1</sub>	e	R	d <sub>1</sub>	Allowable Load N (kgf)		Catalog No.	M
										Vertical lifting/bolt	45° lifting / 2 bolts		
10×1.5	41	25	8	20	41.5	18	4	1.2	11.2	1471 (150)	1471 (150)		10
12×1.75	50	30	10	25	51	22	5	1.4	14.2	2157 (220)	2157 (220)		12
16×2.0	60	35	12.5	30	60	27	5	1.6	18.2	4413 (450)	4413 (450)		16
20×2.5	72	40	16	35	71	30	6	2	22.4	6178 (630)	6178 (630)	LEB	20
24×3.0	90	50	20	45	90	38	8	2.5	26.4	9316 (950)	9316 (950)		24
30×3.5	110	60	25	60	110	45	8	3	33.4	14710(1500)	14710(1500)		30
36×4.0	133	70	31.5	70	131.5	55	10	3	39.4	22555(2300)	22555(2300)		36

Order **Catalog No.** **M**  
**LEB** **16**

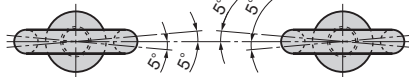
## •Attaching Method

Chamfer tapped holes and attach the eye bolt closely to the seating.

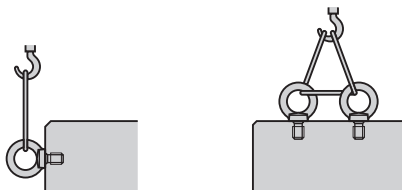
M	d <sub>2</sub>	h
10	13	20
12	16	24
16	20	30
20	24	34
24	28	42
30	36	50
36	42	60



⚠ When two eye bolts are used for lifting, keep the eye bolts in the same direction.



•DO NOT USE EYE BOLTS AS SHOWN BELOW:



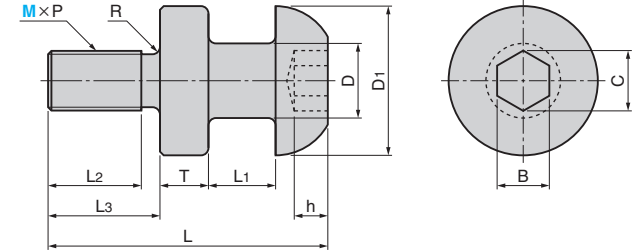
Side lifting

One rope through two eye bolts

# Lifting Hook

MOORING OR CLEAT TYPE

HKB



Material : S45C  
Surface treatment :Black oxide

M × P	D	D <sub>1</sub>	L <sub>1</sub>	L <sub>2</sub>	L <sub>3</sub>	T	L	R	h	B	C	Allowable Load N (kgf)/1P	Catalog No.	M
10×1.5	13	32	10	16	20	8	46	1.5	5	8	9.2	2452 (250)		10
12×1.75	16	36	13	20	24	10	57		6	10	11.7	3530 (360)		12
16×2.0	20	40	18	25	30	13	75	2.0	9	14	16.3	6669 (680)		16
20×2.5	25	48	20	32	37	16	90		12	17	19.8	10395 (1060)	HKB	20
24×3.0	32	58	25	40	47	20	111	2.5	13	19	22.1	15004 (1530)		24
30×3.5	36	68	30	48	56	22	131		16	22	25.6	23830 (2430)		30
36×4.0	40	78	35	58	68	25	148	3.0	18	27	31.4	34814(3550)		36

Order **Catalog No.** **M**  
**HKB** **20**

## •Attaching Method

Chamfer tapped holes and attach the eye bolt closely to the seating.

M	d	h
10	15	22
12	18	26
16	23	32
20	27	40
24	35	50
30	42	60
36	50	72

