

FDSN

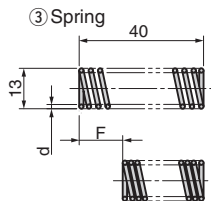
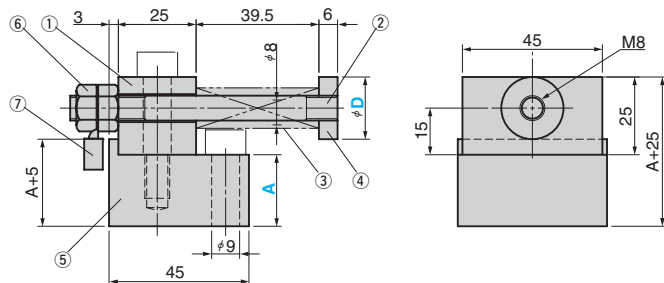
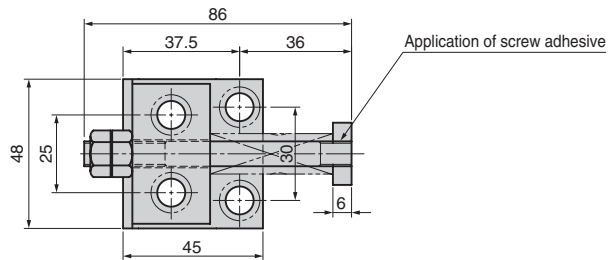
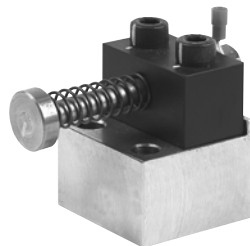


Table of Components

No.	Description	Qty	Material and Remark
①	Insulation Block	1	Phenol resin
②	Stud Bolt	1	SS400 M8
③	Spring	1	SWP-A (Refer to the selection list.)
④	Stopper Plate	1	SS400
⑤	Base	1	SS400
⑥	Hexagon Nut	2	S45C M8(1type)
⑦	Crimp Terminal with Insulation Cover	1	THEV1.25-8 (Nichifu)

Catalog No.	D	A	③Spring (Load Type)
FDSN	20	$20 \leq A \leq 50$	F(Light Load)
	30	(Increments of 5mm)	L(Middle load) M(Heavy Load)



Order

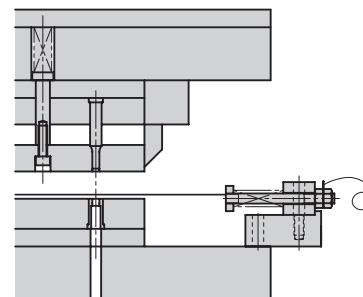
Catalog No.	D	A	③Spring
FDSN	20	35	L

Spring(③) selection list

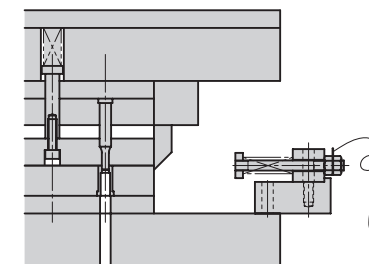
Load Type	kgf/mm	d	F max	kgf max
F	0.05	1.0	18	0.9
L	0.1	1.1	16	1.6
M	0.3	1.4	14	4.2



Example



•When electricity is supplied to the workpiece and the workpiece comes in contact with the sensor, the unit is ON.



•When the workpiece is cut, the unit is OFF.