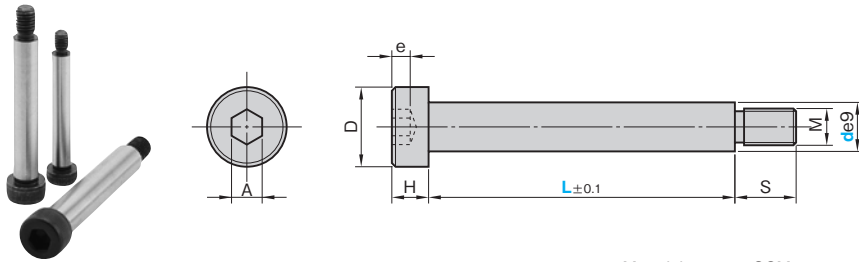


Shoulder Bolt

HEXAGON SOCKET HEAD TYPE

SBLT



Material : SCM435
 Hardness : 39 to 44 HRC
 Hardness class : 12.9

d	e9	D	H	A	e	S	M×P
6.5		10	5	4	2.5	9	M 5×P0.8
8	-0.025 -0.061	13	6	5	3	10	M 6×P1.0
10		16	8	6	4	13	M 8×P1.25
13	-0.032 -0.075	18	10	8	5	15	M10×P1.5
16		24	14	10	7	18	M12×P1.75
20	-0.040 -0.092	27	18	14	9	24	M16×P2.0

Catalog No.	d	L
SBLT	6.5	20 25 30 35 40 45 50 55 60 65 70
	8	20 25 30 35 40 45 50 55 60 65 70 75 80 25 30 35 40 45 50 55
	10	60 65 70 75 80 85 90 100
	13	30 35 40 45 50 55 60 65 70 75 80 85 90 100 110 120 130
SBLT	16	30 35 40 45 50 55 60 65 70 75 80 85 90 100 110 120 130 140 150
	20	40 50 60 70 80 90 100 110 120 130 140 150



Order

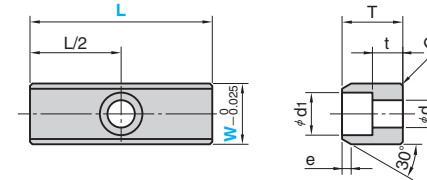
Catalog No.	d	-	L
SBLT	10	-	50

Locating Key

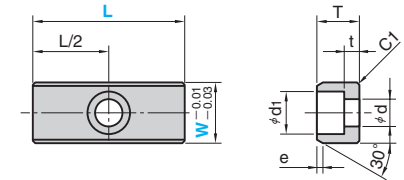
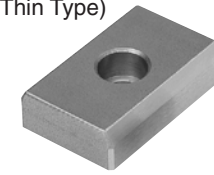
LOCATING KEY

Addition

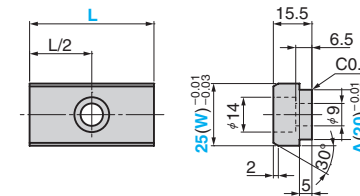
LK



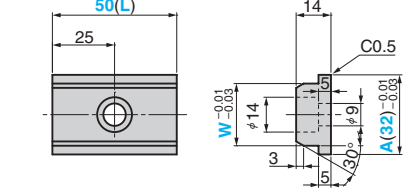
LKU (Thin Type)



LKA (Fitting Type)



LKE (Fitting Type)



Material : S45C

T	t	e	d	d1	Catalog No.	W	L
20	10	3	9	14	LK	20	60 80
		4				25	60 80 100
25	13	5	11	18		28	60 80 100
						32	60 80 100

T	t	e	d	d1	Catalog No.	W	L
14	5	2			LKU	20	50
		3	9	14		25	50 100
						32	32 50

Catalog No.	W	A	L
LKA	25	20	44 50

Catalog No.	W	A	L
LKE	20		50
	25	32	50



Order

Catalog No.	W	-	A	-	L
LK	25	-		-	80
LKU	32	-		-	50
LKA	25	-	20	-	44