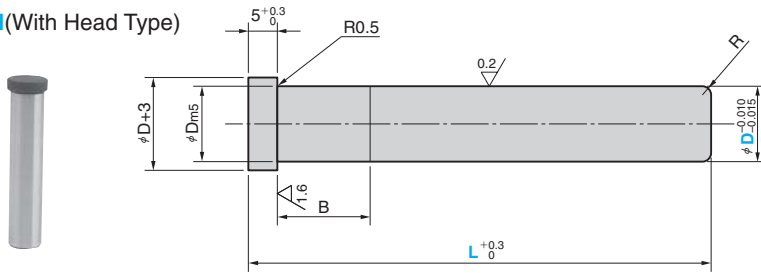


# Stripper Guide Pin

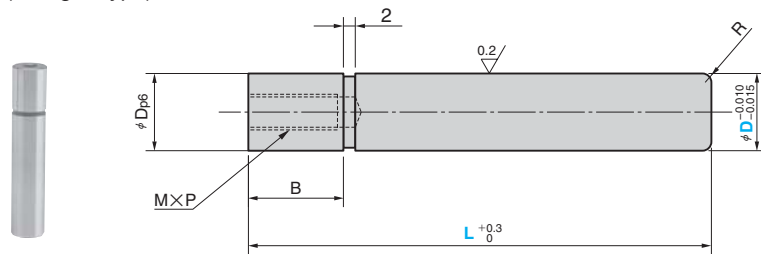
FOR STRIPPER PLATE

CAD  
FILE

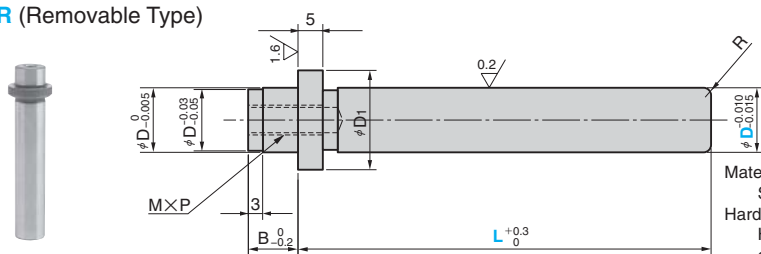
**SUBGH** (With Head Type)



**SUBGA** (Straight Type)



**SUBGR** (Removable Type)



Material :  
SUJ2  
Hardness :  
HRC58  
or more

Catalog No.	D	Dm5	R	B
SUBGH	13	+0.015 +0.007	1.5	16
	16			20
	20	+0.017 +0.008	2.0	25
	25			28

Catalog No.	D	Dp6	M×P Depth	R	B
SUBGA	13	+0.029 +0.018	M6×P1.0 15	1.5	16
	16				20
	20	+0.035 +0.022	M8×P1.25 20	2.0	25
	25				28

Catalog No.	D	M×P Depth	D1	R	B
SUBGR	13	M6×P1.0 15	20	1.5	10
	16		23		
	20	M8×P1.25 20	27	2.0	13
	25		32		

Catalog No.	D	L
SUBGH	13	60
		70
		80
		90
		100
		110
	16	70
		80
		90
		100
		110
		120
20	80	
	90	
	100	
	110	
	120	
	130	
25	80	
	90	
	100	
	110	
	120	
	130	
		140

Catalog No.	D	L
SUBGA	13	60
		70
		80
		90
		100
		110
	16	70
		80
		90
		100
		110
		120
20	80	
	90	
	100	
	110	
	120	
	130	
25	80	
	90	
	100	
	110	
	120	
	130	
		140

Catalog No.	D	L
SUBGR	13	70
		80
		90
		100
		70
		80
	16	90
		100
		110
		120
		130
		140
20	150	
	160	
	70	
	80	
	90	
	100	
25	110	
	120	
	130	
	140	
	150	
	160	



Order

Catalog No.	D	—	L
SUBGH	13	—	80
SUBGA	16	—	90
SUBGR	13	—	70